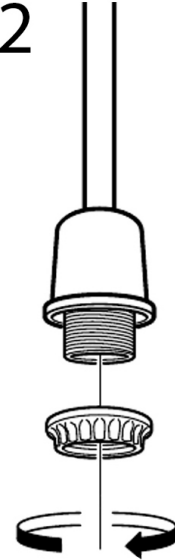



*1-2



It will be sufficient to connect the cables in the product and the cables fixed on the ceiling

- 1- Remove the round ring on the socket part of the chandelier which comes out of the contents of the box, and attach it to the lamp head.
- 2- Replace the round ring and tighten it clockwise. Thus, your installation will be completed.

 Our products are passed through quality control and delivered to our valued customers. If you have detected any problem in our products, you can contact us through the following communication channels. I wish you to use it in good days..



e27-220 v

